

Index	Shaft dimensions, car and landing doors	1
	Standard shaft height	2
	General technical specifications	3
	Technical specifications for each model	4
	Options for each model	5
	Design Lay-outs and Drawings	6

SHAFT DIMENSIONS, CAR AND LANDING DOORS (in mm)

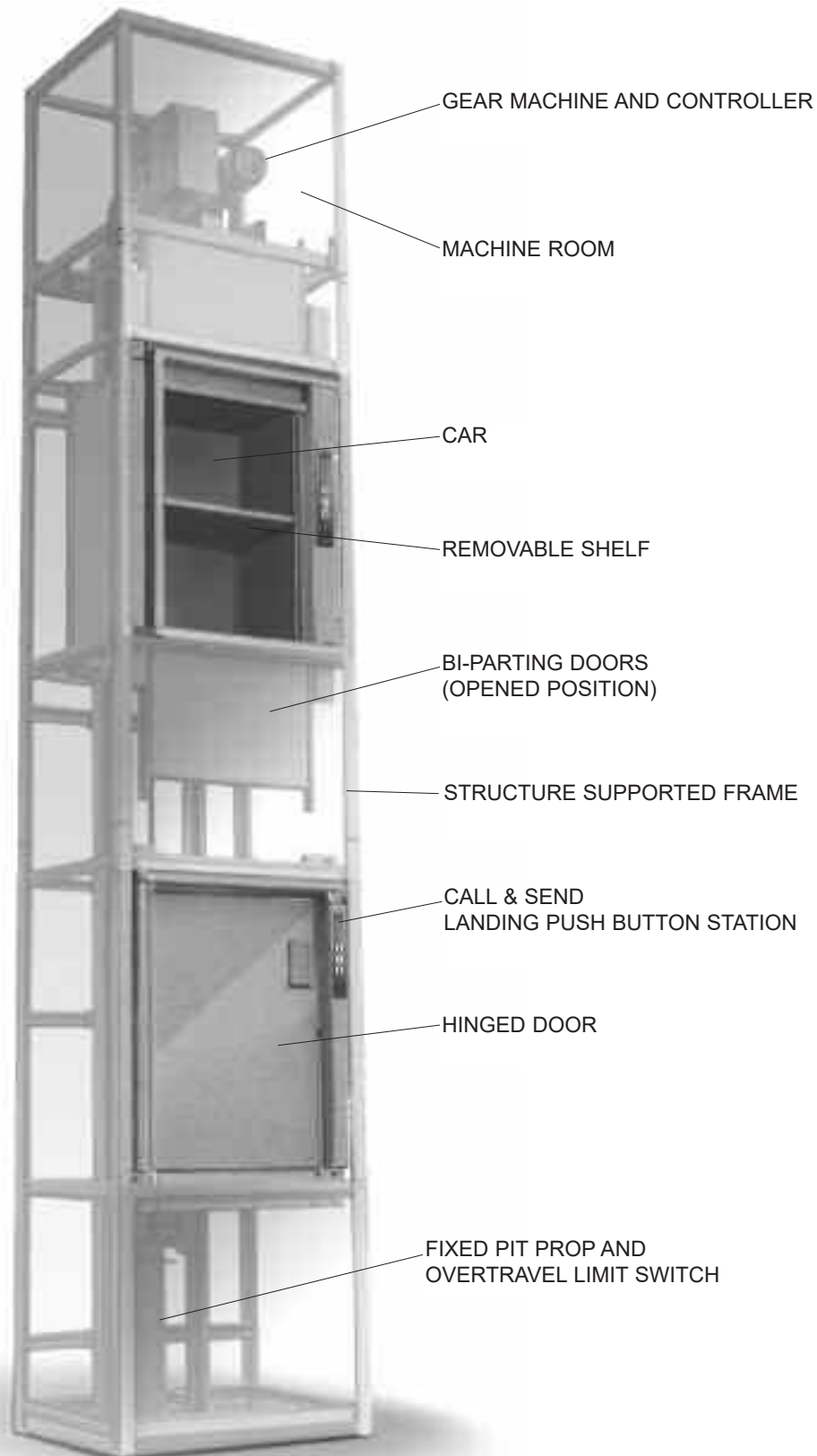
Models	Shaft		Car			Doors pos. B		Doors pos. A-C	
	Width SW	Depth SD	Width CW	Depth CD	Height CH	Width DW	Height DH	Width DW	Height DH
Rated load 12 kg (ask for technical feasibility)									
MIC12	380	490	240	300	500	240	400	240	400
Rated load 50 kg									
DD	540	745	320	510	800	ND	ND	320	800
DL	660	835	420	545	800	320	800	420	800
39/5	760	710	520	420	800	420	800	320	800
NR	760	810	520	520	800	420	800	420	800
41/5	760	810	520	520	1000	420	1000	420	1000
1/5	760	910	520	620	800	420	800	520	800
3/5	760	1010	520	720	800	420	800	620	800
4/5	760	1010	520	720	1000	420	1000	620	1000
42/5	860	710	620	420	800	520	800	320	800
5/5	860	810	620	520	800	520	800	420	800
MG	860	910	620	620	800	520	800	520	800
48/5	860	910	620	620	1000	520	1000	520	1000
7/5	860	1010	620	720	800	520	800	620	800
50/5	960	710	720	420	800	620	800	320	800
13/5	960	810	720	520	800	620	800	420	800
17/5	960	910	720	620	800	620	800	520	800
21/5	960	1010	720	720	800	620	800	620	800
22/5	960	1010	720	720	1000	620	1000	620	1000
29/5	1060	910	820	620	800	720	800	520	800
33/5	1060	1010	820	720	800	720	800	620	800
34/5	1060	1010	820	720	1000	720	1000	620	1000
Rated load 100 kg									
MGS	860	910	620	620	800	520	800	520	800
11/10	860	1110	620	820	800	520	800	720	800
54/10	960	1010	720	720	800	620	800	620	800
MGT	960	1010	720	720	1000	620	1000	620	1000
23/10	960	1110	720	820	800	620	800	720	800
24/10	960	1110	720	820	1000	620	1000	720	1000
37/10	1060	1110	820	820	800	720	800	720	800
38/10	1060	1110	820	820	1000	720	1000	720	1000
MDL1	1060	1110	820	820	1200	720	1200	720	1200
Rated load 200 kg									
62/20	1070	1060	830	730	1200	720	1200	620	1200
MDL2	1240	1330	1000	1000	1200	900	1200	900	1200
Rated load 300 kg									
MDL3	1240	1330	1000	1000	1200	900	1200	900	1200

STANDARD SHAFT HEIGHT (in mm)

No. of Stops	2	3	4	5	6	7	8	9	10	11	12
Shaft height	6800	9800	12800	15800	18800	21800	24800	27800	30800	33800	36800
Shaft height (MIC12)	6520	9520	12520	15520							

GENERAL TECHNICAL SPECIFICATIONS

Microlift: complete view



GENERAL TECHNICAL SPECIFICATIONS

Machine and controller

Located above the shaft on a machine bedplate which is fixed to the structure (the machine of the MIC 12 model is positioned at the bottom of the lift). The motor drives a high quality reduction gearbox fitted with an electro-magnetic disc brake

The controller cabinet is manufactured in sheet steel and finished in gray baked enamel.

Gear

The motor drives a high quality reduction gearbox fitted with a traction vee-sheave. An electro-magnetic disc brake is supplied, with emergency release mechanism for manual lowering. Three phase asynchronous motor with short circuit rotor as standard.

Standard speed

12-24-50 kg:	1 speed	0,35 m/sec (12 kg: 0,3 m/sec)
100 kg:	1 speed	0,35 m/sec
200 kg:	1 speed	0,17 m/sec
300 kg:	1 speed	0,17 m/sec

Power supply

220-240-380-415V 50Hz 3 phase.

220-240V 50Hz 1 phase (optional).

For electric supply different from those listed above, please ask for details.

Operations

Fully automatic single push button control with call and despatch facilities at each entrance, position indicators supplied to identified lift locations.

Commands and signals 24 Vdc protected by fuse, thermal motor protection, electromechanical selector, over-travel limit switch (terminal floors) and fixed pit prop.

Stops

Maximum stops: N. 5 (MIC12) - N. 12 (24-50-100-200-300 kg).

Maximum travel

Model MIC12: 13.90 m

Models 50-100-200-300 kg: 30 m

Car

Manufactured in sheet steel, finished in gray baked RAL 7038 (standard), Daldoss RAL colours range, or stainless steel (AISI 301) with a stainless steel base and a removable stainless steel (AISI 304) shelf (50-100 kg).

The 100-200-300 kg models are equipped with a car frame.

Three entrances can be fitted at each floor with different configurations (DD model: single or 2 opposite entrances only).

The cars of the 12-24-50-100 kg models are supplied pre assembled in factory.

Landing doors

Vertical bi-parting or hinged doors (right or left hand suspended). Finished in gray baked enamel (RAL 7038) or stainless steel (AISI 304).

Door lock with electrical contact. Fire resistant certifications: EI 60 - EI 120 (only hinged door) - BS746 - SISIR - UL - ULC.

Car door (optional)

Vertical bi-parting door with safety contact. Finished in stainless steel AISI 304.

Structure supported frame

Standard modular construction supplied in 3-2-1 m section.

Third guide

Standard on models 200-300 kg, T section guides formed from galvanized steel (optional for other models).

Installation

The lift can be installed indoors or outdoors (with suitable protection). The Microlift structure is completely self supporting; it only needs to be fixed to the floors and ceiling by special fixing brackets which are supplied with the lift.

Installation time

A 2 floors Microlift normally takes 1-2 days to install, depending on site conditions.

Delivery

Short delivery times, with priority for the standard models.

Safety

With regards to safety features, we are able to supply various safety equipment to comply with different national and international standards and regulations.

Guarantee

The Microlift is guaranteed for 12 months from the delivery date providing it is serviced regularly.

Reference Norms

2006/42/CE Machine Directive (Note: electrical supply, main switch, shaft lighting and emergency stop buttons at the top and bottom floors for maintenance purpose must be supplied by the customer).

2004/108/CE Electromagnetic Compatibility.

EN 81-3 Safety rules for the construction and installation of lifts - Part 3: electric and hydraulic service lift.

Directive EN 81.3:2000 + A1:2008 (accessible and not accessible shaft).

Development policy

Microlift undergoes continuous development. We reserve the right to alter specifications and dimensions without prior notice.

TECHNICAL SPECIFICATIONS FOR EACH MODEL

Rated load	12 kg(*)	24-50 kg	100 kg	200 kg	300 kg
Nominal speed (m/sec)	0,30	0,35	0,35	0,17	0,17
Traction	1:1	1:1	1:1	2:1	2:1
Electrical motor	AC motor - self ventilated - flanged				
Poles (N°)	4	4	4	4	4
RPM by 50Hz	1450	1450	1450	1450	1450
Insulation class	F	F	F	F	F
Protection	IP54	IP54	IP54	IP54	IP54
Hp/kw (380V)	0,45-0,33	0,45-0,33	0,9-0,66	0,9-0,66	0,9-0,66
Full load current by 380V-50Hz (A)	1,2	1,2	2,15	2,15	2,15
Starting current 380V-50Hz (A) – 4 x In	4,8	4,8	8,6	8,6	8,6
Hp/kw (220V-1 phase)	0,6-0,44	0,6-0,44	1-0,73	1-0,73	1-0,73
Full load current by 220V-50Hz-1 phase (A)	4,8	4,8	6,5	6,5	–
Starting current 220V-50Hz (A) – 4 x In	16,8	16,8	22,7	22,7	–
Motor/gear coupling	Flanged				
Gear	M100	M100	M200	M200	M200
Ratio	1:65	1:65	1:65	1:65	1:65
Diametrical pitch mm	250	300	300	300	300
Numbers of grooves	1v+1u	2v+1u	2v+1u	2u+1v	2v+1u
Vee groove angle	35°	35°	35°	35°	35°
Electromagnetic brake (Vdc)	48	48	48	48	48
Traction rope					
Number/diameter	1-6 mm	2-6 mm	2-6 mm	2-6 mm	2-6 mm
Car					
Construction	Bended steel plates				
Steel plate thickness (in mm)	1-1,5	1-1,5	1-1,5-2	1-1,5-2-3	1-1,5-2-3
Bi-parting and hinged doors					
Construction	Bended steel plates				
Steel plate thickness (in mm)	1	1	1	1	1
Counter weight					
Construction	without	Steel frame + separate iron filler weights			
Guide					
Formed galvanized steel plate	delta 40	double delta 80	double delta 80	double delta 80	double delta 80

* Ask for technical feasibility.

OPTIONS FOR EACH MODEL

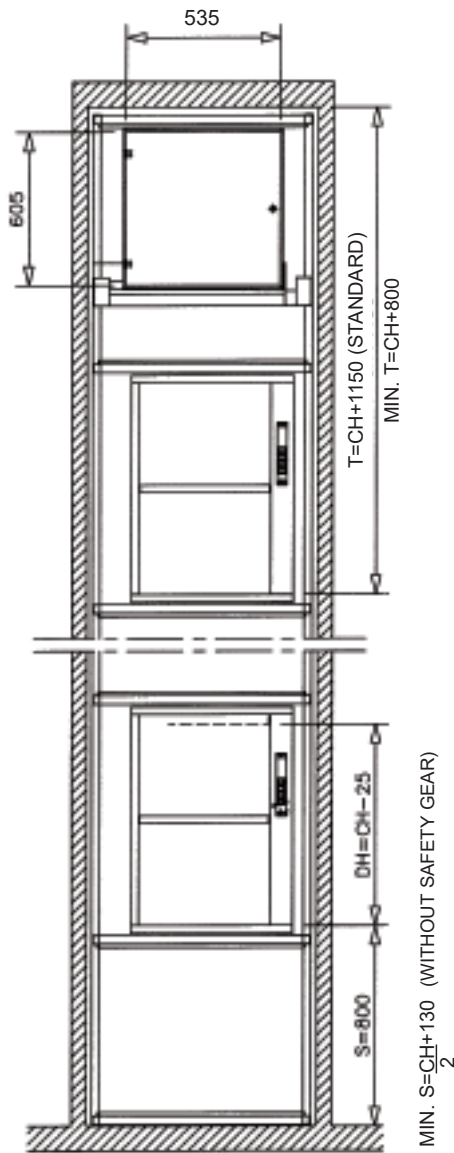
Rated load	12 kg(*)	24-50 kg	100 kg	200 kg	300 kg
Gear and controller					
Motor and controller 1 phase	yes	yes	yes	yes	no
Motor voltage or frequency different from 220/240/380/415V 50Hz	yes	yes	yes	yes	yes
Speed 0.6 m/sec (by 60% capacity)	yes	yes	yes	no	no
Speed 0.35 m/sec and motor power 1.5 Hp - 1.1kW	no	no	no	yes	yes
Motor and transformer tropicalized	yes	yes	yes	yes	yes
Motor power 1.5 Hp - 1.1 kW	no	no	yes	yes	yes
Power supply cabinet (with thermal overload switch)	yes	yes	yes	yes	yes
Phase failure relays	yes	yes	yes	yes	yes
Flight timer	standard	yes	yes	yes	yes
Timer to return lift to main floor	yes	yes	yes	yes	yes
Interlinked controller keyswitch	yes	yes	yes	yes	yes
Controller positioned outside shaft	no	yes	yes	yes	yes
Speed regulator VVVF	yes	yes	yes	yes**	yes**
Car and counterweight					
Ceiling light fixture in lift car	no	yes	yes	yes	yes
Slack rope contact	no	yes	yes	no	no
Car heating device with temperature thermostat	no	yes	yes	no	no
Overload switch set with buzzer	no	yes	yes	yes	yes
Electromagnetic retiring cam set	no	yes	yes	yes	yes
Car safety gear set	no	no	yes	yes	yes
C/weight safety gear set	no	no	yes	yes	yes
Car additional shelf	no	yes	yes	no	no
Wired push button station and electrical spare parts					
Door open buzzer	yes	yes	yes	yes	yes
Buzzer with continuous sound and call blocking	yes	yes	yes	yes	yes
Out of service indicator (used with controller keyswitch)	yes	yes	yes	yes	yes
Push button and electrical accessories					
External arrival signal (to be connected to external unit)	yes	yes	yes	yes	yes
Intercom	yes	yes	yes	yes	yes
Key switch (overrides push button)	yes	yes	yes	yes	yes
Triangular lock mechanism	no	yes	yes	yes	yes
Waterproof push button station (to be installed into the wall, in case of hinged doors)	no	yes	yes	yes	yes
Bi-parting doors					
Automatic bi-parting doors	no	yes	yes	yes	yes
Structure supported frame					
Machine room door gray baked enamel RAL 7038 or stainless steel (AISI304) EI 60	yes	yes	yes	yes	yes
Safety facing (for entrances that are not used)	yes	yes	yes	yes	yes
Third guide set (in position B or A or C)	no	yes	yes	standard	standard
Reduced headroom (machine room and reduced extra-travel)	no	yes	yes	no	no
Various-special options					
Other models not included in the catalogue (old range)	no	yes	yes	yes	yes
Models with special dimensions (upon request, if feasible)	no	yes	yes	yes	yes
Models with machine below (upon request)	standard	yes	yes	yes	yes
Models complying with:					
- EN 81.3:2000, accessible shaft	no	yes	yes	yes	yes
- EN 81.3:2000, non accessible shaft	no	yes	yes	yes	yes
Double Decker models	no	yes	no	no	no
Models with side-top drive unit (for reduced headroom)	no	yes	no	no	no

* Ask for technical feasibility.

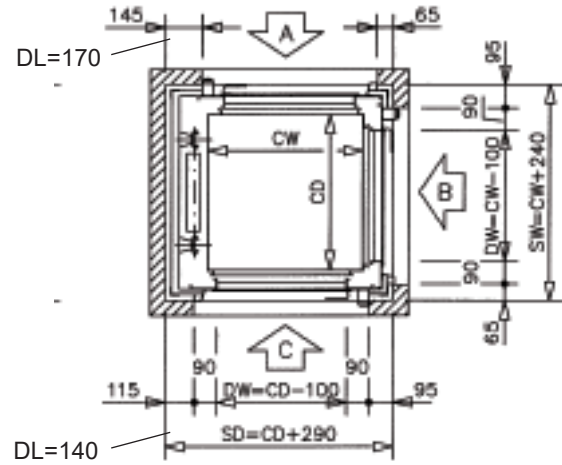
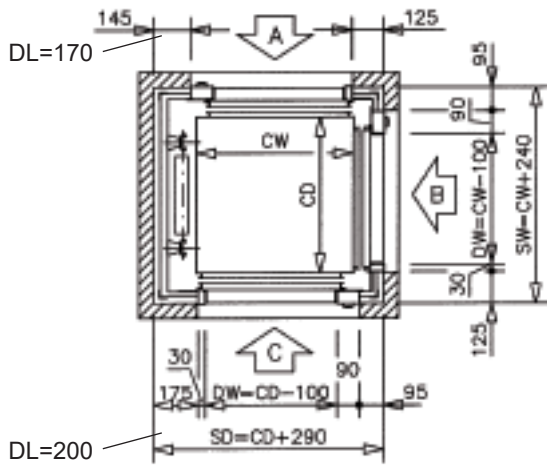
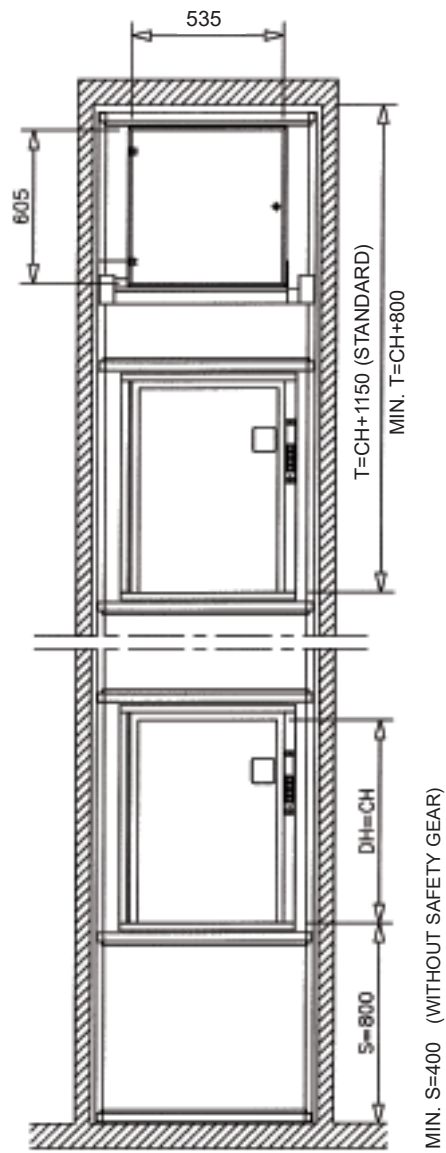
** For exact leveling of the car at the landings.

Vertical and horizontal section for models 24/50/100kg

Bi-parting doors

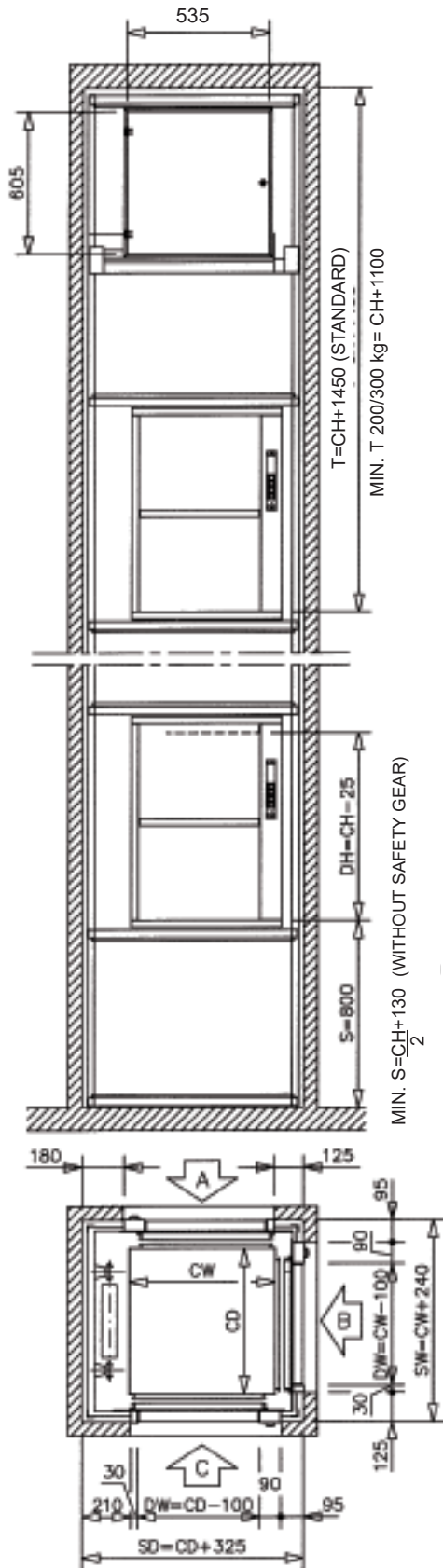


Hinged doors

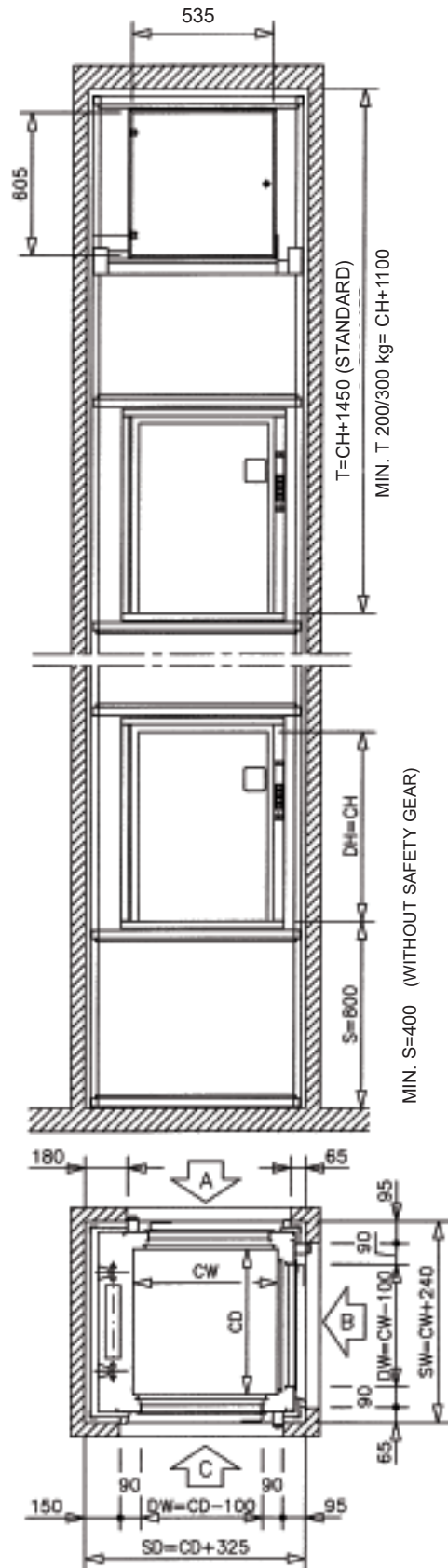


Vertical and horizontal section for models 200/300kg

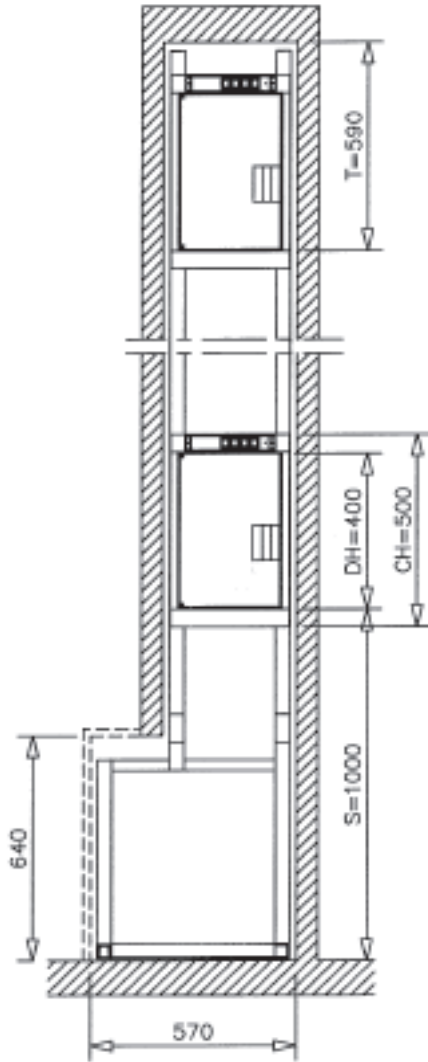
Bi-parting doors



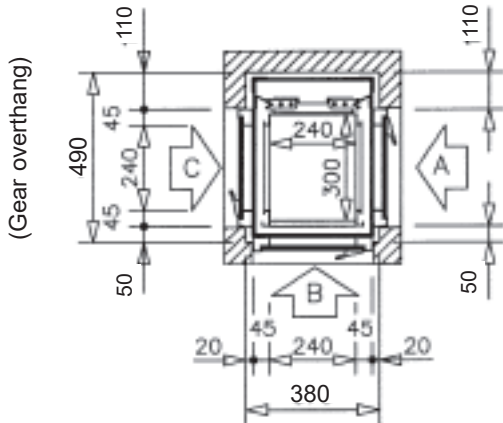
Hinged doors



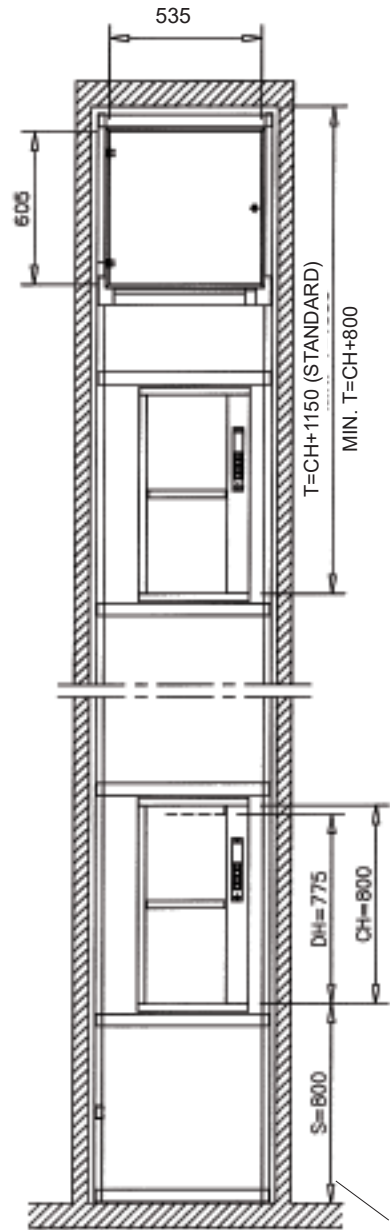
Vertical and horizontal section for model MIC 12/s (capacity 12 kg *)



NOTE: Hinged door only with left suspension

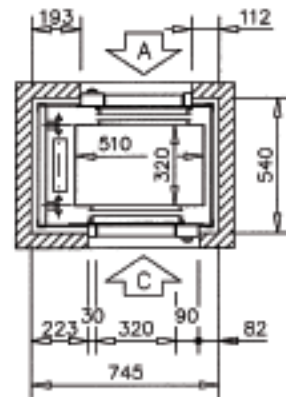


Vertical and horizontal section for model DD50 (capacity 24/50 kg)



MIN. BI-PARTING DOORS
S=CH+130 (WITHOUT SAFETY GEAR)

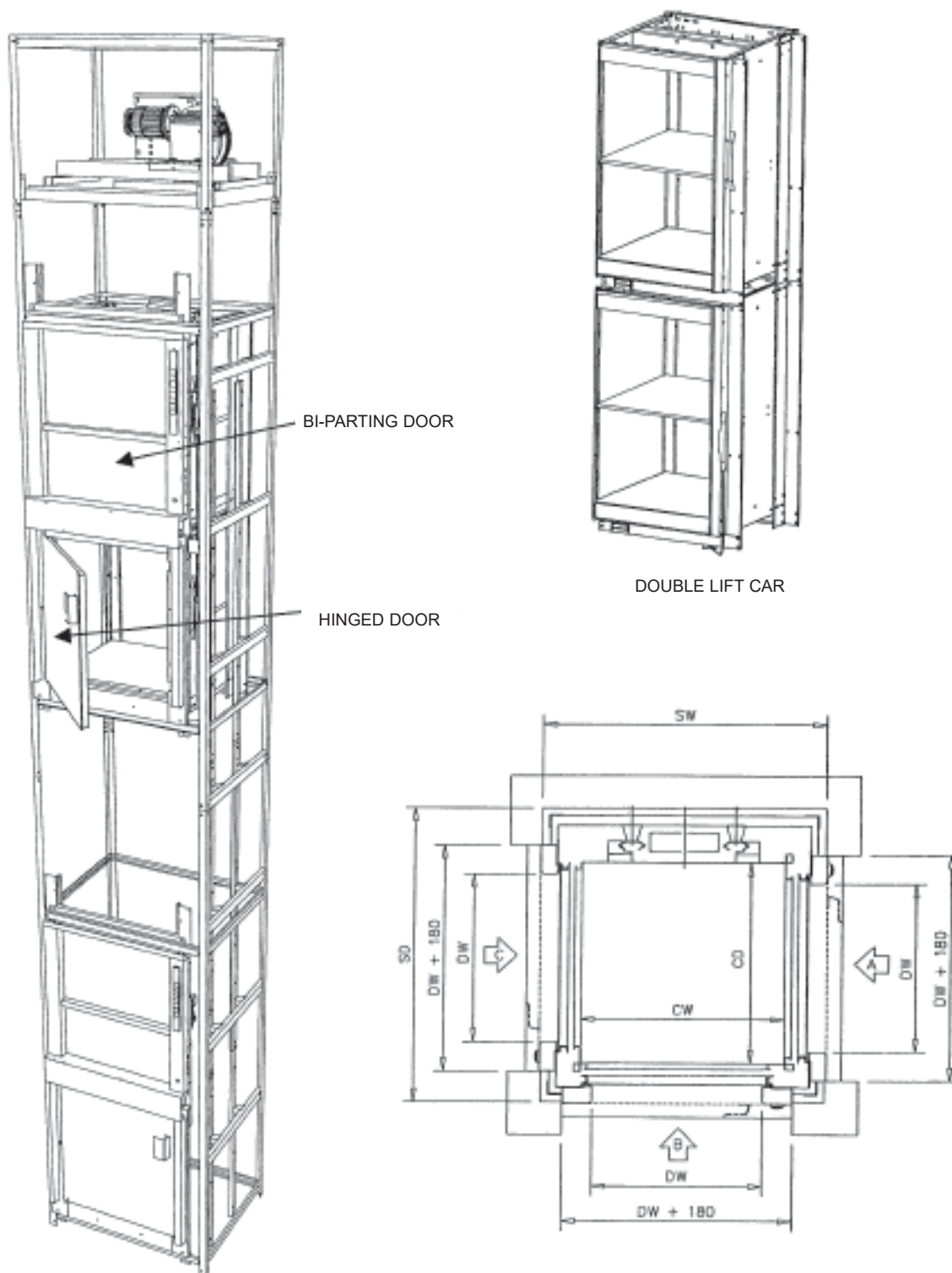
MIN. HINGED DOORS S=400



* Ask for technical feasibility.

DESIGN LAY-OUTS AND DRAWINGS

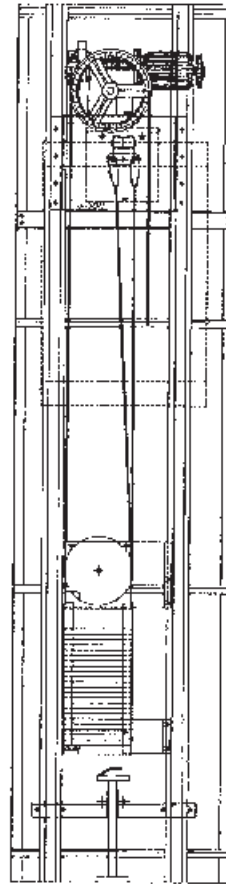
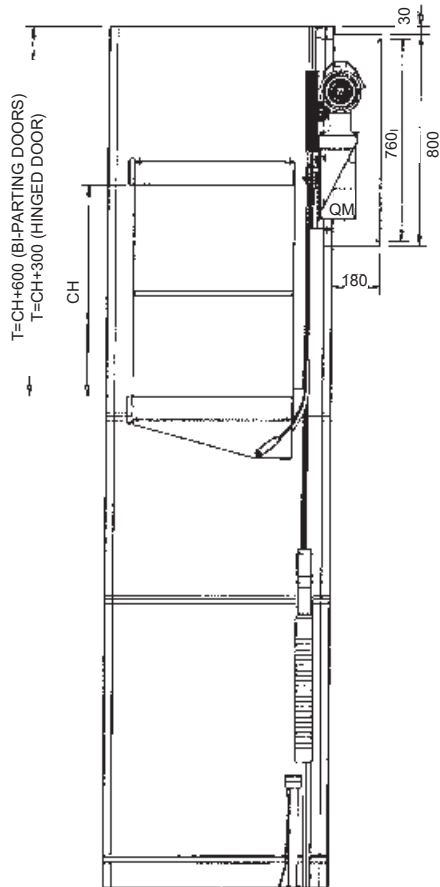
Vertical and horizontal section for Double Decker model (double car)



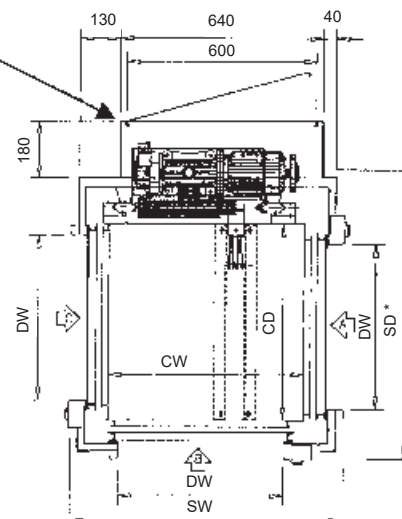
Models	Rated load	Car			Doors*		Shaft		Pit	Headroom
		CW	CD	CH	DW	DH	SW	SD		
T-NR	50	520	520	800	420	800	760	810	400	3000
T-MGS	100	620	620	800	520	800	860	910	400	3000
T-MGT	100	720	720	800	620	800	960	1010	400	3000
T-MDL	100	820	820	800	720	800	1060	1110	400	3000

* ENTRANCES IN POSITION A, B, C - FOR AC ENTRANCES HINGED DOORS SUPPLIED WITH LEFT OR RIGHT SUSPENSION

Vertical and horizontal section for models with machine on side-top of the shaft



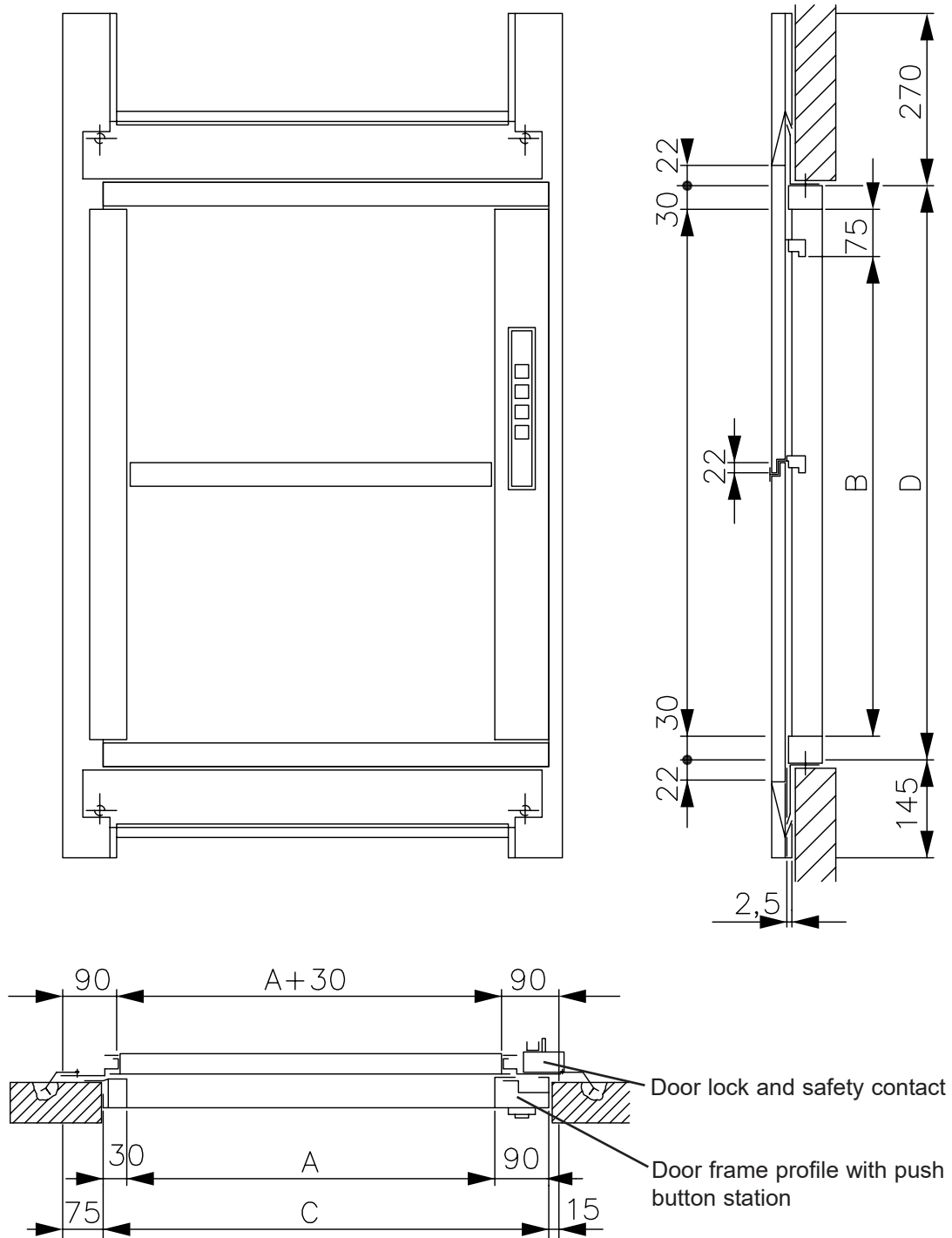
MACHINE ROOM CABINET



* +180 MM IN THE HEADROOM FOR THE MACHINE ROOM CABINET

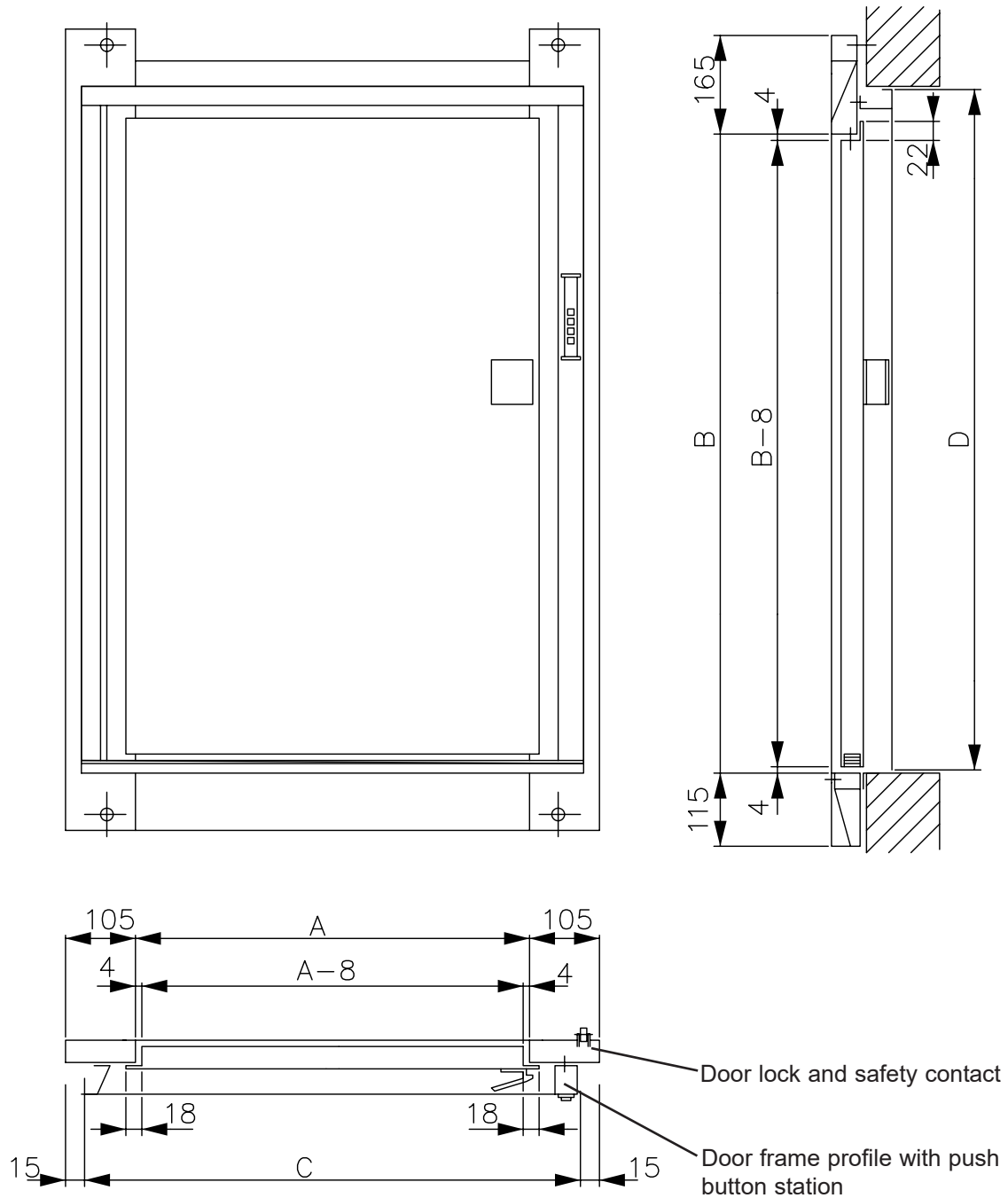
Model	Rated load	Car			Doors		Shaft		Pit	Headroom bi-parting doors	Headroom hinged door
		CW	CD	CH	DW	DH	SW	SD*			
LH MG	50	620	620	800	520	800	860	910	800	CH+600	CH+300

Bi-parting doors



Models	A	B	C	D	Models	A	B	C	D	Models	A	B	C	D
32/80	320	775	440	910	32/100	320	975	440	1110	32/120	320	1175	440	1310
42/80	420	775	540	910	42/100	420	975	540	1110	42/120	420	1175	540	1310
52/80	520	775	640	910	52/100	520	975	640	1110	52/120	520	1175	640	1310
62/80	620	775	740	910	62/100	620	975	740	1110	62/120	620	1175	740	1310
72/80	720	775	840	910	72/100	720	975	840	1110	72/120	720	1175	840	1310
90/80	900	775	1020	910	90/100	900	975	1020	1110	90/120	900	1175	1020	1310

Hinged landing doors (left/right suspended)



Models	A	B	C	D	Models	A	B	C	D	Models	A	B	C	D
32/80	320	800	500	880	32/100	320	1000	500	1080	32/120	320	1200	500	1280
42/80	420	800	600	880	42/100	420	1000	600	1080	42/120	420	1200	600	1280
52/80	520	800	700	880	52/100	520	1000	700	1080	52/120	520	1200	700	1280
62/80	620	800	800	880	62/100	620	1000	800	1080	62/120	620	1200	800	1280
72/80	720	800	900	880	72/100	720	1000	900	1080	72/120	720	1200	900	1280
90/80	900	800	1080	880	90/100	900	1000	1080	1080	90/120	900	1200	1080	1280